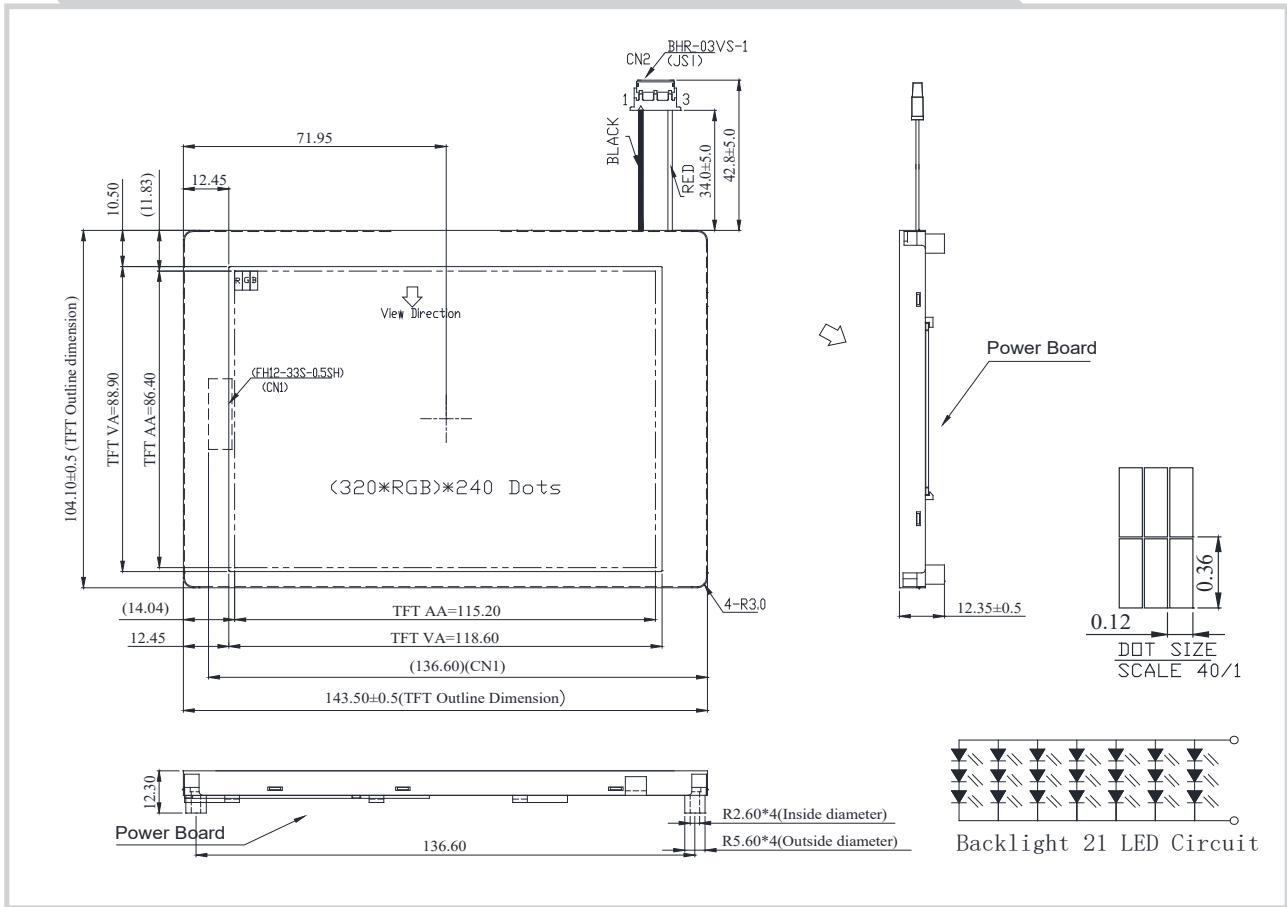


NTF57C TFT Graphic 320x240 dots



Feature

1. 5.7 inches Color TFT
2. Dot Matrix: 320xRGBx240
3. View Direction: 6 o'clock
4. Gray Scale Inversion Direction: 12 o'clock
5. 3.3V power supply of VCC
6. Option RTP/CTP
7. Interface : RGB 666(DE, SYNC)

Pin No.	Symbol	function
1	GND	Ground
2	CK	Clock signal for sampling each data signal
3	Hsync	Horizontal synchronous signal
4	Vsync	Vertical synchronous signal
5	GND	Ground
6	R0	Red Data bit(LSB)
7~10	R1~4	Red Data bit
11	R5	Red Data bit(MSB)
12	GND	Ground
13	G0	Green Data bit(LSB)
14~17	G1~4	Green Data bit
18	G5	Green Data bit(MSB)
19	GND	Ground
20	B0	Blue Data bit(LSB)
21~24	B1~4	Blue Data bit
25	B5	Blue Data bit(MSB)
26	GND	Ground
27	ENAB	Signal to settle the horizontal display position
28~29	VCC	+3.3V power supply
30	R/L	Selection signal for horizontal scanning
31	U/D	Selection signal for vertical scanning
32	NC	No connect
33	GND	Ground

Mechanical Data

Item	Standard Value	Unit
Module Dimension	143.5 x 104.1	mm
Viewing Area	118.6 x 88.9	mm
Active Area	115.2 x 86.4	mm
Dot Pitch	0.12 x 0.36	mm

Electrical Characteristics (Operating conditions)

Item	Symbol	Min	Typ	Max	Unit
Supply Voltage	VCC	3	3.3	3.6	V
Supply Current	ICC	---	110	170	mA

Electrical Characteristics (B/L driving conditions)

Parameter	Symbol	Min	Typ	Max	Unit
LED Voltage	VBL+	9	---	10.5	V
LED Current	IL	---	140	---	mA